

Customize with Post Printing

Minimums are just 1 case!



Screen Printing

In this method a screen is used instead of a plate. Ink is pushed through a fine mesh screen to transfer the desired image to the product. It is our most versatile process because of its gentle and precise nature; and we can match any PMS ink color. Multiple colors and critical registration can be accomplished on a wide variety of products. The ink we use is cured by UV light which creates a glossy finish. A matte additive can be used to remove the gloss; or a metallic powder can be added to the ink to create a brushed metallic look. Screens must be made on every order, repeat or new as the screen is reclaimed and used again. The film used to make the screens is stored in the file to be used on future orders.

Hot Stamping

This process uses a metal plate in combination with heat, pressure & duration to transfer the foil to the surface of the product, leaving the desired impression. The plate is kept on file for future use. Foil colors can be metallic, matte, or gloss. Each foil has a different backing to adhere to different substrates. Printing colors are limited to available foil from our suppliers. If a specific PMS color is desired, screen printing is the better option. This is the only method to obtain a true metallic image. Multiple color printing can be accomplished however foil should not overlap.



Flexo Printing


A rotary system using water based ink and a flexible plate which is mounted directly onto the printing cylinder. The plate is kept on file for future use. It is our fastest post-printing process and quite economical. Product options are limited to paper finishes for ink absorption. Product with handles must be fixed like that of a twisted paper handled shopping bag. Bags with rope handles will not run well on this type of printing machine. Single color prints are best suited to this process. When printing multiple colors, registration cannot be critical due to machine variances.



Easily identify the printing method.

Follow this coding system to identify the printing method available for the products listed in this catalog. SS = Screen Printing, HS = Hot-Stamp, FL = Flexo Printing. This will be located in the far right side of the header line. The letters will appear where that method of printing is available for that item. Pricing can be found in the back of the catalog on pages 76-79.

Product Code	Size	Pkg.	Wt/Pkg	1	5	10	25+
Aruba Green Tinted Kraft Boxes with auto-lock bottoms & tuck lids, kraft interior - Made in Canada							FL HS SS
EF-GL333ARU	3" x 3" x 3"	100	5	31.72	28.15	27.46	26.77

 Samples & Eaches: The "Samples Each" icon indicates products that will incur a sample charge. Use the each pricing shown on the product page for cost. Insert an "X" after the dash in the code to signify an "EACH" item. (ie. PP-ART3885 is a CASE and PP-XART3885 is an EACH.)

Screen Printing

Printed with UV Inks		1 Color	2 Colors	3 Colors
Bags: Pricing per 1,000 pieces or Lot				
Paper Shopping & Merchandise Bags; Mod Bags; Sophie Shoppers: Euro Style Bags including Manhattan, Laminated Matte & Gloss				
1 side	1,000	255	485	689
	3,000	242	460	654
	5,000	230	437	621
2 sides	1,000	345	656	932
	3,000	328	623	885
	5,000	311	592	841
Poly Bags including Frosted Soft Loop, Ameritotes, Patch Handle, Super Gloss, Superwave, Frosted & Reclosable Bags				
1 side	1,000	283	538	764
	3,000	269	511	726
	5,000	255	485	690
2 sides	1,000	377	716	1018
	3,000	358	680	967
	5,000	340	646	919
Boxes: Pricing per 1,000 pieces or Lot				
All Paper Boxes including Jewelery, Gift, Cupcake, Apparel, Italian Specialty, View-It Stationery & Kraft Embossed Simplex 2 pc Boxes				
1 side	1,000	250	475	675
	2,000	238	451	641
	3,000	226	429	609
Misc Items: Pricing per 100 pieces				
Wine Carriers & Specialty Corrugated Boxes				
1 side	100	107.00	203.30	288.90
	300	49.00	93.10	132.30
	500	37.00	70.30	99.90
	1,000	25.00	47.50	67.50
Non-Woven Totes, Metallized Fashion, & Cotton Bags				
Tins & Organza Bags				
1 side	100	171.00	324.90	461.70
	300	57.00	108.30	153.90
	500	55.00	104.50	148.50
	1,000	54.00	102.60	145.80
	2,500	52.00	98.80	140.40
Specialty Items: Pricing per 100 pieces				
All Frosted Rigid Packaging Items (Envisions) pricing per style; Take Out Boxes w Wire Handles; Vinyl Bags; CD/Gift Card Folders (inside and outside)				
1 side	Less than 1,000	49.50	103.70	164.30
	1,000	33.00	69.20	109.60
	2,500	31.20	59.40	84.30
	Minimum Print Charge	247.50	518.50	821.50
No Charge for PMS Standard Inks, \$10 charge for Metallic Inks and Matte inks				
Screen Charges (per screen/per color) for New Order = \$75, for Repeat Order = \$55				

General Information for Post-Printing

- Quantity:** Post-printing allows us to combine multiple sizes of the same style of product to accumulate toward the per thousand cost, provided one common plate & foil/ink are used. Specifically when hot-stamping, changing the plate or foil using a \$20 change fee is a good way to obtain quantity pricing. Change fees cannot be used in screen or flexo printing.
- Pricing:** one common plate & foil/ink are used. Specifically when hot-stamping, changing the plate or foil using a \$20 change fee is a good way to obtain quantity pricing. Change fees cannot be used in screen or flexo printing.
- Rush Orders:** All orders that must be shipped within 5 business days of proof approval may be subject to a 25% upcharge of the printing price. Air freight charges may be required for new plates.
- Artwork:** Camera Ready artwork is preferred. We can accept PDF, AI, or EPS files. Font must be supplied or artwork outlined. Jpeg artwork will not provide quality printing. Changes requested to be made to supplied artwork will be billed at \$60 per hour with \$15 minimum charge. We can print up to 45 line screen in Flexo and up to 100 line screen in Screen Printing. In Hot-Stamping half tones do not appear the way they do in ink. Instead a screen adds texture to the solid foil impression.
- Registration:** Screen Printing tolerance is 1/16" shift in any direction between colors. Hot-Stamping tolerance is 1/8" in any direction with no critical alignment. Flexo Printing tolerance is 1/2" in any direction with no critical alignment.
- Coverage:** Hot-Stamping & Flexo Printing cannot tolerate heavy ink coverages therefore we recommend screen printing for those applications.
- Merch Bags:** Merchandise bags are hot-stamped flat which creates a ghost impression on the back of the bag. To avoid this, the bags can be inserted; a \$50 fee applies.
- Restrictions:** In Flexo Printing, a \$50 insert fee applies to any bag or box with an overall length measuring less than 11".

Screen Printing Inks

Coordinate your logo with your favorite solid color tissue on page 42!



PMS colors approximate

OR choose any PMS color at no additional charge!

Standard Inks

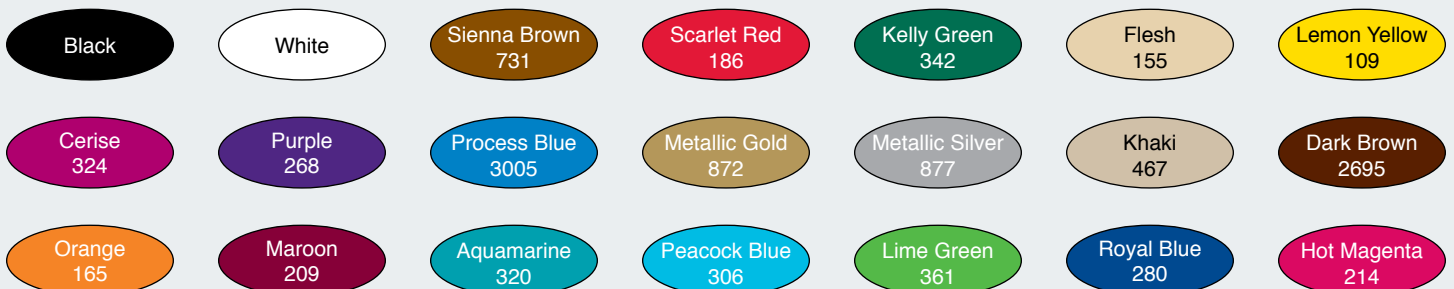
*Formulated specifically for
Non-Woven Bags & Cotton Bags*

Maximum Imprint Area

Bag Size
13" x 13"
16" x 11-1/2"
20" x 15-1/2"

Imprint Area
9" x 9"
14" x 7"
18" x 11"

Stock Ink colors available - PMS colors approximate to coated stock



Hot Stamping

Bags: Pricing per 1,000 pieces or Lot	Up to 25 Sq Inch	26 - 50 Sq Inch	51-90 Sq Inch	91-150 Sq Inch
Paper Shopping Bags, SOS Bags				
Per Color / 1 Side	145	175	200	250
Per Color / 2 Sides	261	315	360	450
Euro Style Bags including Manhattan, Matte & Gloss Laminated & Sophie Shoppers				
Per Color / 1 Side	170	215	255	307
Per Color / 2 Sides	255	270	300	350
Poly Shoppers including Frosted Soft Loop & Ameritotes; Mod Bags & Metallized Fashion				
Per Color / 1 Side	186	219	257	319
Per Color / 2 Sides	334	393	463	573
Paper Merchandise Bags				
Per Color / 1 Side	129	150	171	193
Per Color / 2 Sides	231	270	309	347
Superwave & Frosted Merchandise Bags				
Per Color / 1 Side	164	186	210	236
Per Color / 2 Sides	296	334	378	424
Reclosable Bags (Subject to foil color)				
Per Color / 1 Side	121	143	n/a	n/a
Velvet Pouches, Tin-Tie Bags				
Per Color / 1 Side	185	n/a	n/a	n/a
Boxes: Pricing per 1,000 pieces or Lot				
Jewelry, Italian Specialty & VIEW-it Stationery				
Per Color / 1 Side	100	115	135	164
Kraft Embossed Simplex 2pc Boxes; Apparel & Gift Boxes; Cupcake & Mod Boxes				
Per Color / 1 Side	155	180	200	229
Specialty Items: Per Color / Per Side - Pricing per 100				
All Frosted Envisions Packaging Items (pricing per style), CD & Gift Card Folders (MB-GC) & Tins - with PET Window				
Less than 1,000	25.50	29.75	35.75	n/a
1,000 and above	18.50	21.50	26.00	n/a
Minimum Print Charge	127.50	148.75	178.75	n/a

Note that not all foil colors will adhere to all product types.
Additional Foil Colors are available - Additional charges may apply depending upon final choice.

Plate Cost:

To determine plate size in square inches add 1" to both width and height of image and multiply together.

Up to 30"	31" - 40"	41" - 50"	51" - 60"	60" - 70"	71" - 80"	81" - 90"	Over 91"
70.00	78.00	98.00	117.00	137.00	156.00	176.00	\$2.00 /Sq Inch

Flexo Printing

Bags: Pricing per 1,000 pieces or Lot	1,000	2,000	3,000
Paper Shopping Bags & SOS Bags (Universal size shopper cannot be flexo printed)			
Per Color / 1 Side	100	95	85
Per Color / 2 Sides	230	215	200
Paper Merchandise Bags			
Per Color / 1 Side	85	80	75
Per Color / 2 Sides	165	150	135
Boxes: Pricing per 1,000 pieces or Lot			
Paper Boxes including Gift, Gable, Apparel, & Cupcake boxes without windows.			
Per Color / 1 Side	85	80	75

Ink color will vary depending upon substrate being printed due to absorption and texture of surface.

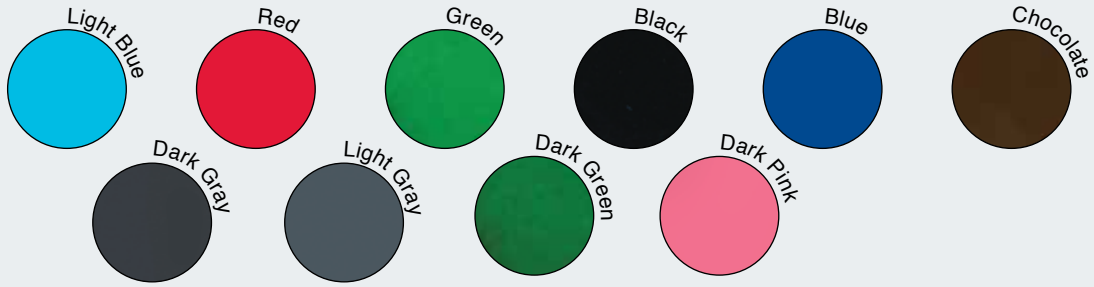
Plate Cost:

To determine plate size in square inches add 1" to both width and height of image and multiply together.

Up to 30"	31" - 40"	41" - 50"	51" - 60"	60" - 70"	71" - 80"	81" - 90"	Over 91"
69.00	70.00	70.00	73.00	73.00	75.00	84.00	\$0.95 /Sq Inch

Standard Foil Colors

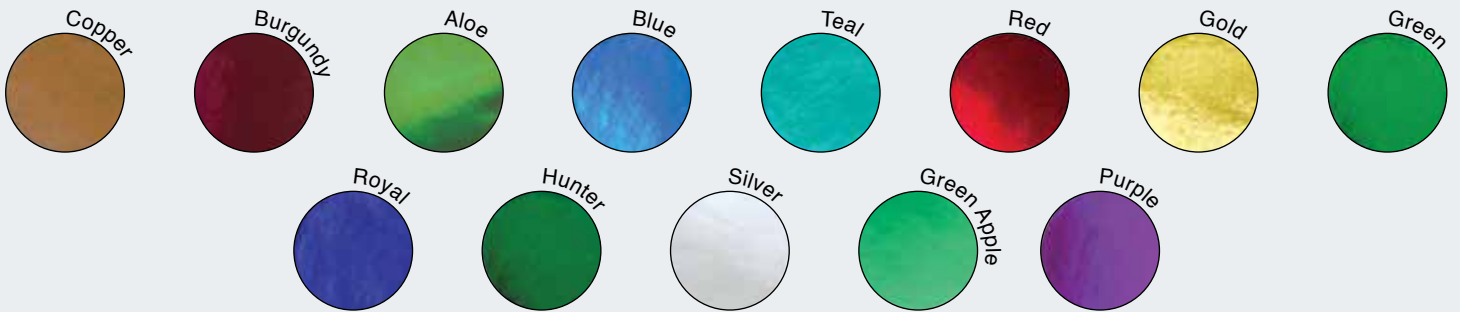
Gloss Finish



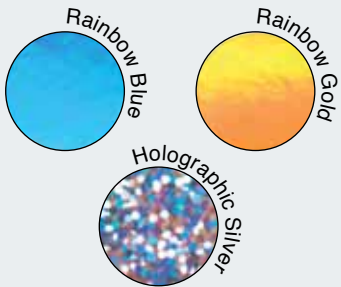
Matte Finish



Standard Metallic



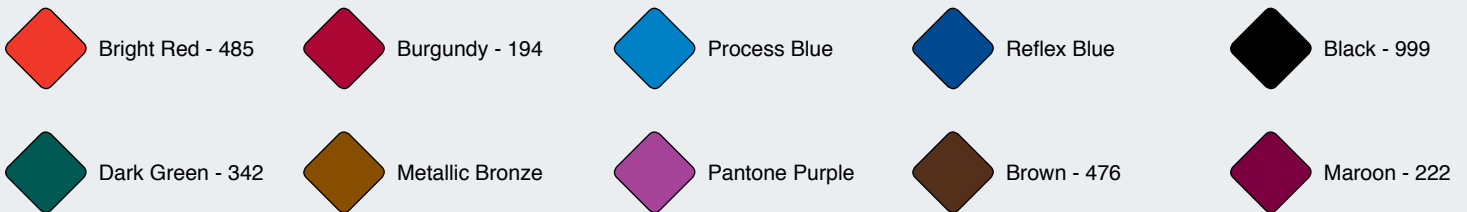
Special Effects



Brushed Metallic



Standard Ink Colors For Flexographic Printing



--- SUPPLY ORDER FORM ---

MAC PAPER SUPPLY, INC.

FOR YOUR CONVENIENCE, USE THIS FORM TO ORGANIZE YOUR ORDER.
PHONE, FAX OR MAIL ORDER -- OR ORDER ONLINE:

PHONE: 800-486-5783 or 316-772-0311
FAX: 800-207-7518 or 316-772-0253
www.macpaper.com

MAIL:
MAC PAPER SUPPLY
P.O. BOX 184
SEDGWICK, KS 67135

SHIPPING ADDRESS: _____ Date: ___/___/___
Business Name: _____
Attn: _____
Street Address: _____
City/State/Zip: _____ Sales Tax#: _____
Daytime Phone:(___) ___ - ___ ext. ___ Fax:(___) ___ - ___
Is shipping address residential? _____ E-Mail: _____

PAYMENT: __ Discover __ Visa __ MasterCard __ Am Express __ Sending Check
Credit Card#: _____ Security Code: ___ ___ ___
Name on Card: _____ EXP. Date: ___/___
Authorized Signature: _____
Mailing address for credit card receipt (if different than above): _____

QTY	ITEM #	DESCRIPTION (include size/color)	Price ea.	TOTAL

(attach additional page if necessary) Merchandise Total _____
Kansas only--if you have not completed & sent us a sales tax exemption certificate--add sales tax.
Freight charges will be added to Credit Card charge. based on weight and shipping zone.
Standard shipping is Ground.
Minimum freight charge is \$8.50.

SERVICE AREA: U.S.A. ONLY
THANK YOU -- WE APPRECIATE YOUR BUSINESS.